



G.L. BRUNO ASSOCIATES, INC.
(Metal Stud and Drywall Division)

12/16/2019

Submitted To: Tulare Local Healthcare District
869 Cherry Street
Tulare, CA 93274

Proposal Expires: 12/31/2019

Proposal \$131,122

Project: NPC-2 Upgrades (patch holes in ceiling subsequent to removal of surface mounted light fixtures)

Divisions: Light Gauge Metal Framing
Gypsum Wallboard

Base Bid: Furnish and install all labor & material to patch (120) holes in hospital corridor ceilings. Locations per drawings by Kluger Architects dated 8/29/19 (Delta 5, AMC 002 INTO ACD 001). Work to be performed per a modified version of detail 2/AC-1.0. Contractor proposes to use 16GA metal stud backing as opposed to 14GA.

Inclusions:

- 1 Non-Structural Metal Studs (6" X 16 GA)
- 2 Gypsum Board, Drywall (1" Core Board)
- 3 Gypsum Board, Drywall Finish
- 4 Demo Existing Metal Plate from Abandoned Light
- 5 Demo Existing Plaster Ceiling for Clean Patch
- 6 Bag & Dispose of GLB Debris Only
- 7 Install FS-One Firestop at Toggle-Bolt Holes
- 8 Paint Patch to Match Existing Ceiling
- 9 Prevailing Wage and Certified Payroll
- 10 Off-Hours Work (work to start at 4pm or 5pm)

Exclusions:

- 1 Trash dumpster by Owner
- 2 Repair of other trade damage
- 3 Spray Fireproofing
- 4 Insulation
- 5 Acoustical Joint Sealants
- 6 Structural Supports for Equipment
- 7 Access Panels
- 8 Any and all wood blocking/strips
- 9 Mobile Containment Carts by Owner (2)
- 10 14 GA Flat Stud Backing (GLB Proposes 16 GA)
- 11 Temporary Patches (done by Howe Electric)
- 12 Hazardous Material Testing or Removal

PROPOSED PROCESS (to be performed within mobile cart provided by Adventist Health)

1. Demo and remove existing sheet metal from abandoned light fixture
2. Cut/prep +/- 12" X 12" square opening in existing plaster ceiling to prep for new 1" core board
3. Install 6" X 16GA metal stud backing, attaching to existing 1-1/2" cold rolled channel framing per 2/AC-1.0
4. Install new 1" core board drywall per 2/AC-1.0
5. Plug toggle-bolt holes using FS-One firestop
6. Firetape & finish patch to match existing/adjacent ceiling
7. Paint to match existing/adjacent ceiling (paint spec to be provided by owner)

Acknowledgements:

- 1 Drawings by Kluger Architects, dated 8/29/19 (Delta 5, AMC 002 INTO ACD 001).
- 2 ACD 001
- 3 GLB estimates to complete (3) lights per night (42 working days).
- 4 See attached photos of existing conditions

Submitted by: Leo Duran

Leo Duran
Sr. Project Manager

Copy to: Files

PROPOSED DETAIL CHANGE.

16

6" 44-GA. FLAT STUD BACKING
ATTACH TO (E) FRAMING WITH
TABS & #12 SELF TAPPING
SCREWS OR 16 GA. SADDLE TIE

(E) 1" CEMENT PLASTER
CEILING ON 1 1/2" COLD ROLLED
CHANNEL FRAMING

FILL (E) VOID FROM REMOVED
LIGHTING FIXTURE WITH 1"
CORE BOARD CUT TO FIT
OPENING. SCREW TO BACKING
AND FIRE TAPE JOINTS AND
PAINT. PROVIDE BACKING
SUPPORT TO EXISTING
FRAMING

(E) SURFACE MOUNTED LIGHT
FIXTURE. SEE DETAIL 2.2/AD
FOR REVISED ANCHORAGE

NOTE: REMOVE CEILING MOUNTED FIXTURE WHERE INDICATED AT
SELECTED LOCATIONS. SEE LEGEND FOR LOCATION OF FIXTURE
REMOVAL

TYPICAL CEILING REPAIR

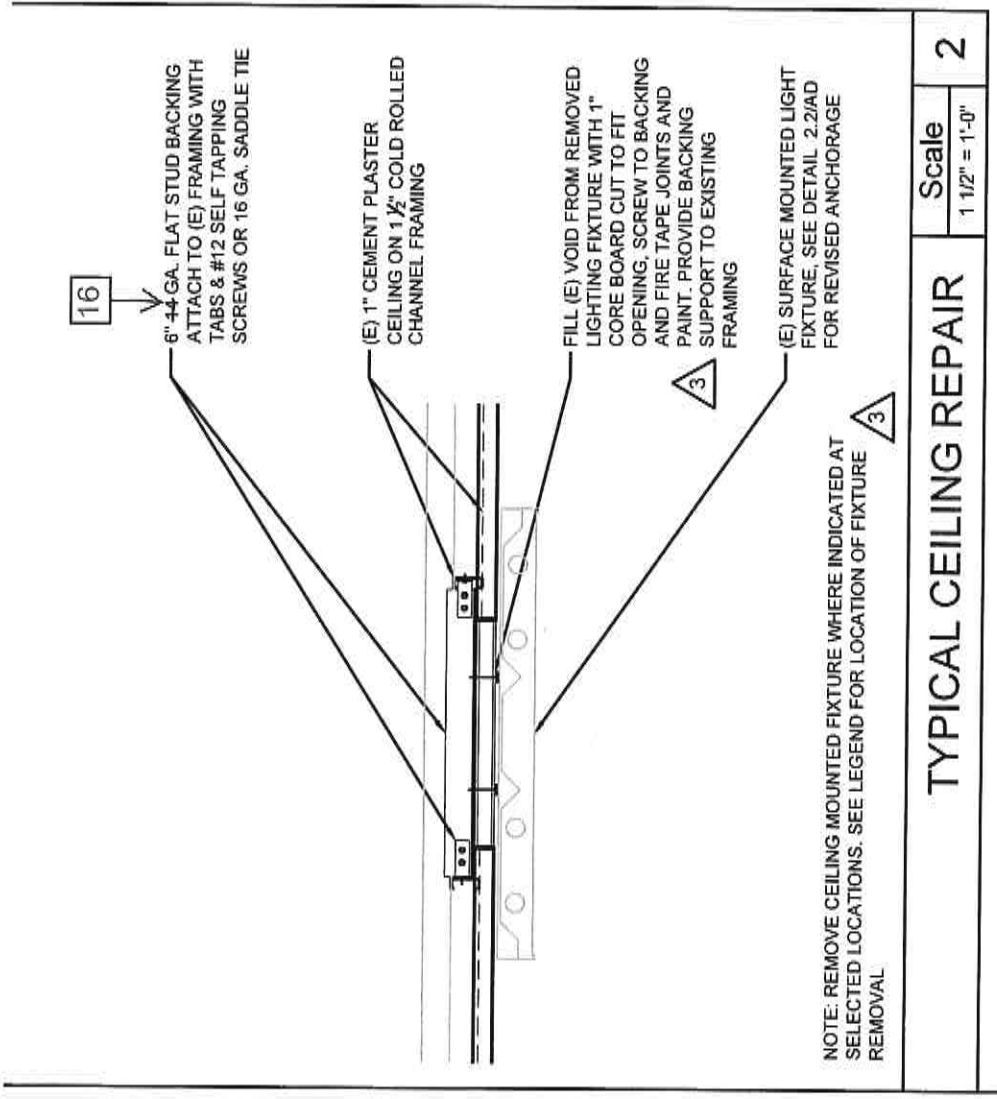
Scale

1 1/2" = 1'-0"

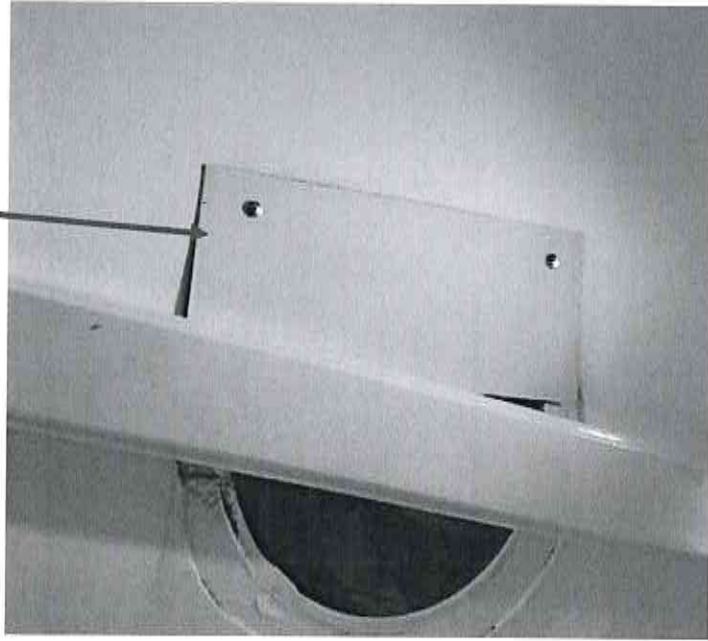
2

3

3



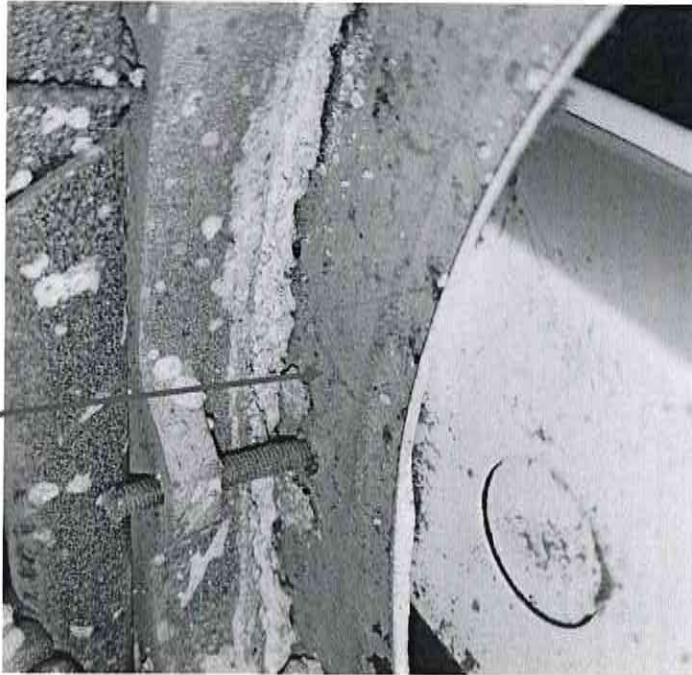
SHEET METAL PLATES COVER EXISTING HOLE
OPENING, TO BE REMOVED BY HOWE ELECTRIC.



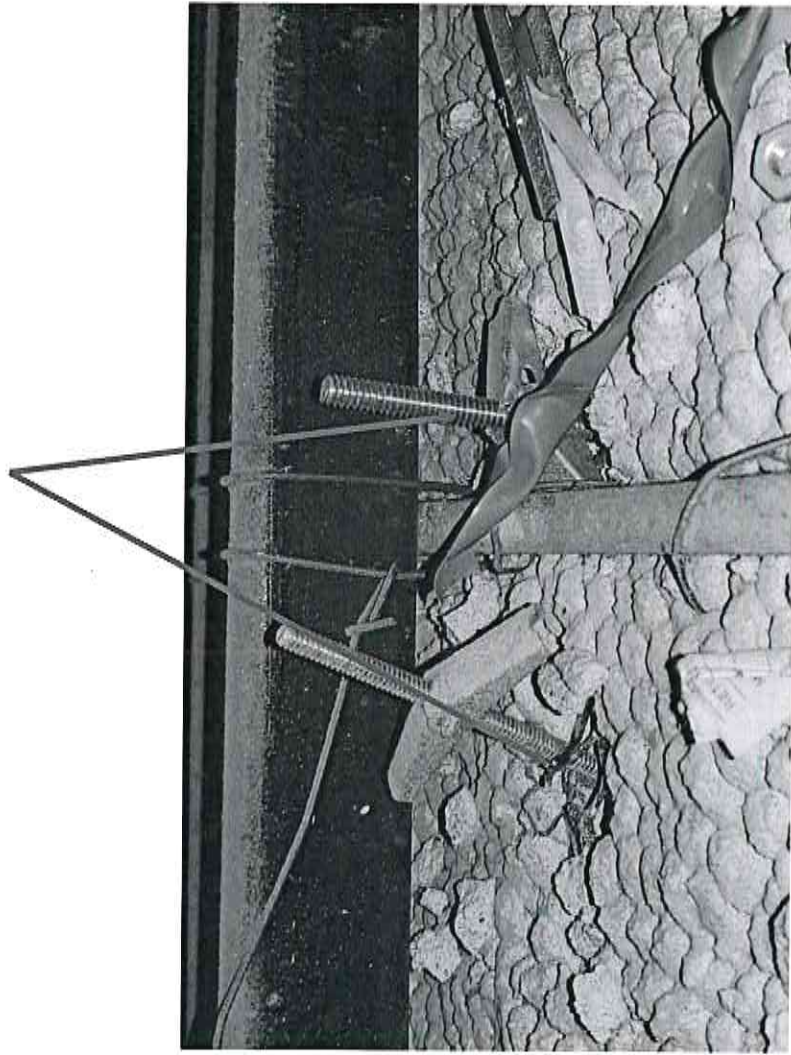
ESTIMATED 12" X 12" METAL PLATE TO BE
DEMO'D BY GLB IN PREPARATION FOR PATCH.



GLB TO REMOVE EXISTING +/- 12" X 12" METAL HOUSING AND WILL NEED TO "CLEAN" EDGES FOR A "SQUARE" PATCH USING 1" CORE BOARD.



GLB TO PATCH HOLES FROM TOGGLE BOLTS THAT WILL BE REMOVED BY HOWE ELECTRIC. TO BE PATCHED WITH FS-ONE FIRESTOP.



GLB TO CLEAR AREA ABOVE NEW 6" X 16 GA METAL STUD BACKING

